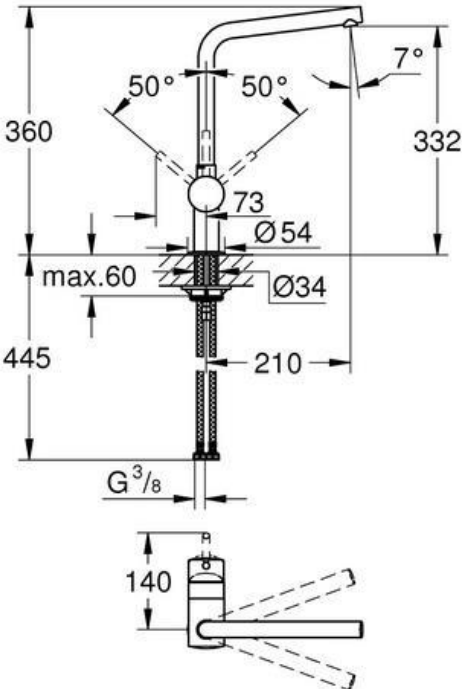








PROJECT		REF		REV	ITEM CODE	
LOCATION		DATE			PAGE	

SANITARY WARE SPECIFICATION SHEET

Item Descriptions	GROHE (Germany) "Minta" Brushed warm sunset single lever sink mixer 1/2" with L-shaped spout; nominated flow rate 4.9 l/min in WELS Grade 1 ; Registration No. TM 18-0258					<div>Illustration/ Drawing</div>  <div><div>用水效能標籤 Water Efficiency Label</div><div>WELS Grade 1</div><div>GROHE StarLight®</div><div>GROHE SilkMove®</div></div>											
Dimensions	L210 x W140 x H360 mm																
Model	31375DL0 (Mixer) 402671031 (Aerator)																
Finish	Brushed Warm Sunset																
Manufacturer	GROHE Limited																
Supplier	Acme Sanitary Ware Co. Ltd Mr. Eric Wong/ Mr. Don Yuen																
Contact Tel/Fax	(852) 2388-7171 / (852) 2710-8012																
E-mail	acme@acmesanitary.com.hk																
Website	www.acmesanitary.com.hk																
<table><tr><td>Dynamic flow pressure (kPa)</td><td>50</td><td>150</td><td>250</td><td>350</td><td>500</td></tr><tr><td>Flow rate (l / min)</td><td>3.05</td><td>4.83</td><td>5.00</td><td>5.00</td><td>5.40</td></tr></table>						Dynamic flow pressure (kPa)	50	150	250	350	500	Flow rate (l / min)	3.05	4.83	5.00	5.00	5.40
Dynamic flow pressure (kPa)	50	150	250	350	500												
Flow rate (l / min)	3.05	4.83	5.00	5.00	5.40												
<div>"Minta"</div> <ul style="list-style-type: none">• Single-lever sink mixer 1/2"• L-spout• GROHE StarLight finish• GROHE SilkMove 46 mm ceramic cartridge• adjustable flow rate limiter• swivel tubular spout• swivel range 0°/150°/360°• flexible connection hoses• rapid installation system• min. recommended pressure 1 bar																	
<div><div></div><div>31375GL0 31375DC0 31375DL0 31375A00</div></div> <div><div>Colour options:</div><div><div><div>0001 StarLight Chrome</div><div>DC01 SuperSteel</div><div>DA01 Warm Sunset</div><div>A001 Hard Graphite</div><div>AL01 Brushed Hard Graphite</div></div><div><div>GL01 Cool Sunrise</div><div>GN01 Brushed Cool Sunrise</div><div>DL01 Brushed Warm Sunset</div><div>BE01 Polished Nickel</div><div>EN01 Brushed Nickel</div></div></div></div>																	

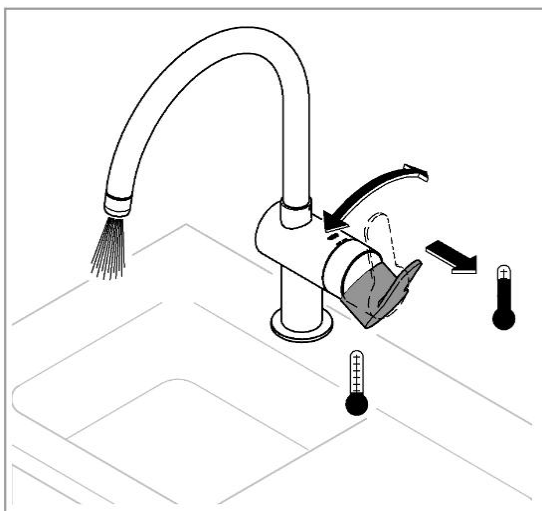
Note:  <https://www.youtube.com/watch?v=EL9NiocwjFk>
 https://www.youtube.com/watch?v=54j4_hdg28s&v=uk

* All information of the above is for the reference only. No prior notice is made if any changes.

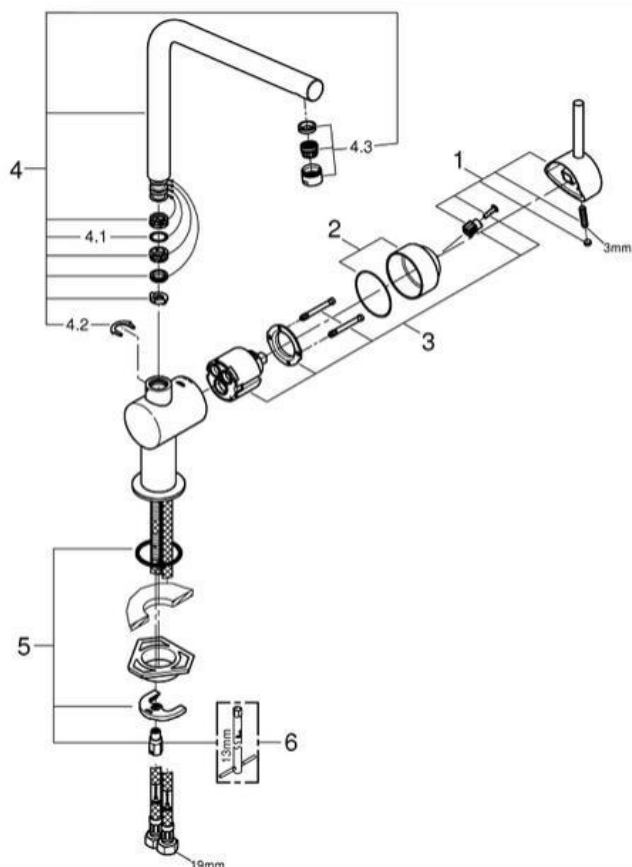


PROJECT		REF		REV	ITEM CODE	
LOCATION		DATE			PAGE	

SANITARY WARE SPECIFICATION SHEET



A stylish, minimal kitchen doesn't mean compromising on performance. The first thing you'll notice about GROHE's Minta faucet is its sleek, clean silhouette, perfect for a contemporary kitchen. But what you'll enjoy day after day is its fantastic flexibility. With a pull-out spray head with dual spray control it makes cleaning, rinsing and prepping easy, letting you get the most out of your kitchen.



Pos.-nr.	Prod. description	Order-nr.
1	Lever	46015000
2	Cap	46025000
3	Cartridge	46048000
4	Spout	13348000
4.1	Sealing washer Ø 13.5 x Ø 2.75	0128500M
4.2	Safety ring	0485300M
4.3	Mousseur	64186000
5	Shank fastening assembly	46249000
6	Mounting wrench	19017000*

* Optional accessories

Note:

* All information of the above is for the reference only. No prior notice is made if any changes.

註冊號碼 (Registration No.): TM 18-0258



自願參與用水效益標籤計劃 - 水龍頭
Voluntary Water Efficiency Labelling Scheme - Water Taps



茲證明
This is to certify that

將下列水龍頭在本計劃內註冊：
has registered the following water tap under this scheme :

牌 子 / Brand	:	GROHE
型 號 / Model	:	31375XXX + 402671031
種 類 / Type	:	Mixing
原產地 / Country or Region Origin	:	Portugal

在用水效益標籤上展示的標誌

Symbolic Presentation on the Water Efficiency Label



滴水點

Water droplet(s)

用水效益級別

Water Efficiency Grade

: 1

耗水量

Water Consumption

: 4.9

公升/分鐘

litres/minute

簽發日期:

Date of Issue:

11 October 2018



水務署

Water Supplies Department



水務署署長(鍾兆榮代行)
for Director of Water Supplies



水務署
Water Supplies Department

總部 Headquarters

香港灣仔告士打道七號入境事務大樓 48 樓

Registration Tower, 7 Gloucester Road, Wan Chai, Hong Kong

本署檔號
Our ref.
來函檔號
Your ref.



/2023 T/J(581/2023)

電話
Tel.
傳真
Fax.

2824 0578

19 July 2023



**Approval of "GROHE" Sink Mixer
(General Acceptance No. C20230526)**

Your E-Application [file-id: ETJ-GA-20230531-40] dated 8 June 2023 and subsequent submission received by this department on 23 June 2023 refer.

Having considered the test report ref. 222320PC230104A issued on 2 June 2023 by Fugro Technical Services Limited, this Authority accepts that the fitting described below complies with, and its use when correctly installed does not contravene, the Waterworks Ordinance and Regulations.

Name of Manufacturer: Grohe AG

Country of Origin: Portugal

Brand: Grohe

Details of Fitting: 3/8" Single lever sink mixer

Model: 31375XXX
(where "XXX" denotes the code of colour)

Body Markings: **GROHE**

Expiry Date: 26 April 2028



This Authority hereby permits the use of the above fitting in fresh water plumbing systems subject to full adherence to Waterworks installation requirements. In particular, you are required to draw your customers' attention to the following requirement-

"The cold water supply to the fitting shall be drawn from the same source that supplies the hot water apparatus so as to provide a balanced pressure and to obviate the risk of scalding in the event of a restriction or failure in the water supply."

A condition of this acceptance is that the fitting to be installed shall be replicas of the sample as certified by the testing agent mentioned above and without modifications. This acceptance may be withdrawn at any time if the standard of the fitting installed fails to meet that of the approved sample or if the fitting is found to be unsuitable for use in fresh water plumbing systems.

This acceptance is only applicable to the main body of the fitting, unless otherwise specified.

For the use of the fitting in any project, the General Acceptance Number of this letter must be quoted as a means of identification of acceptance of the fitting by this Authority.

Should you have any enquiries, please contact our Engineer Ms Winnie LO at tel. no. 3583 4086.

Yours faithfully,



(YAU Hau Yin)
for Director of Water Supplies

Encl.

c.c. WSD 3321/1/82] - without catalogue
 ME/MC] - with soft copy only